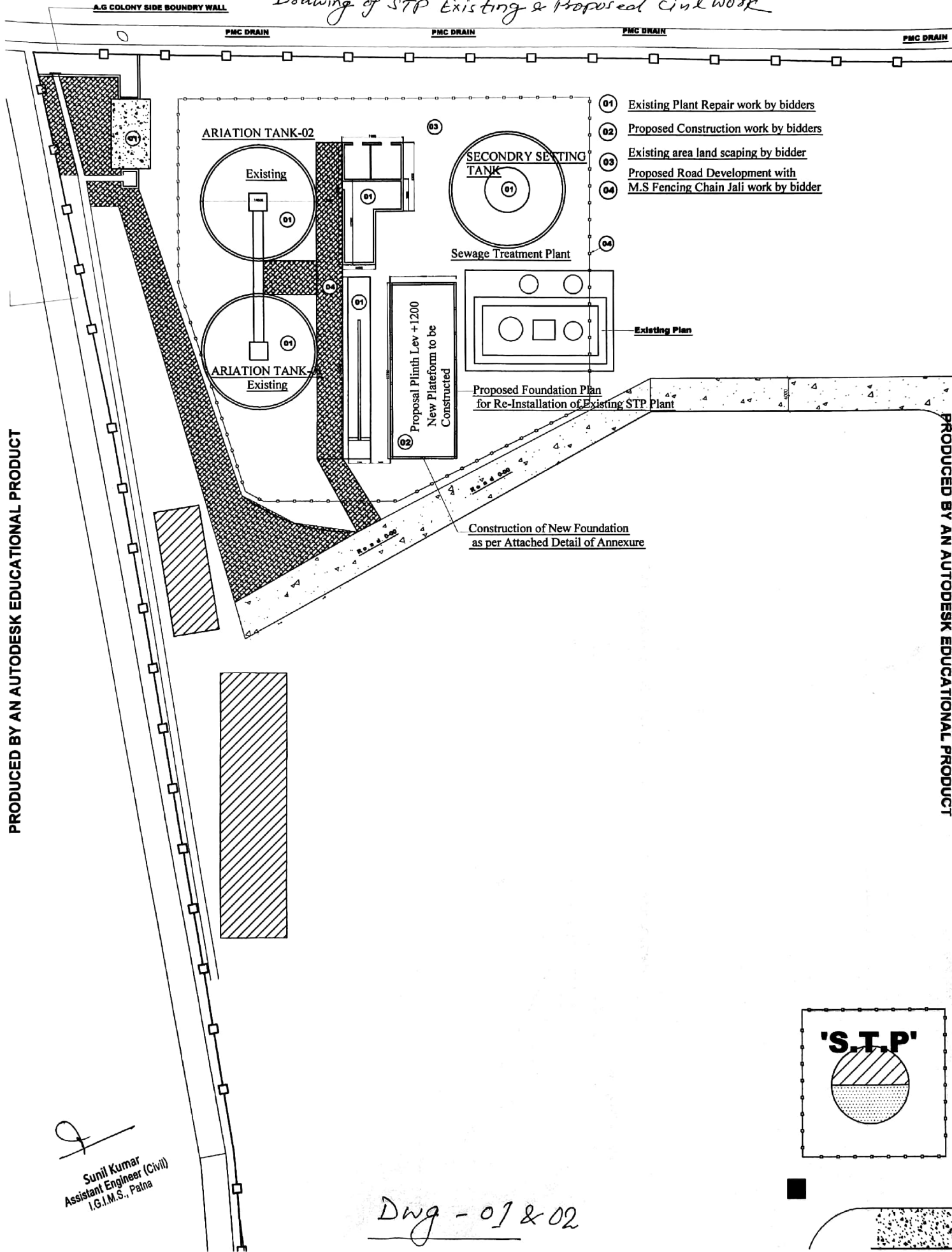


ANNEXURE - III
Drawing of STP Existing & Proposed civil work

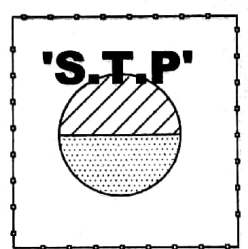


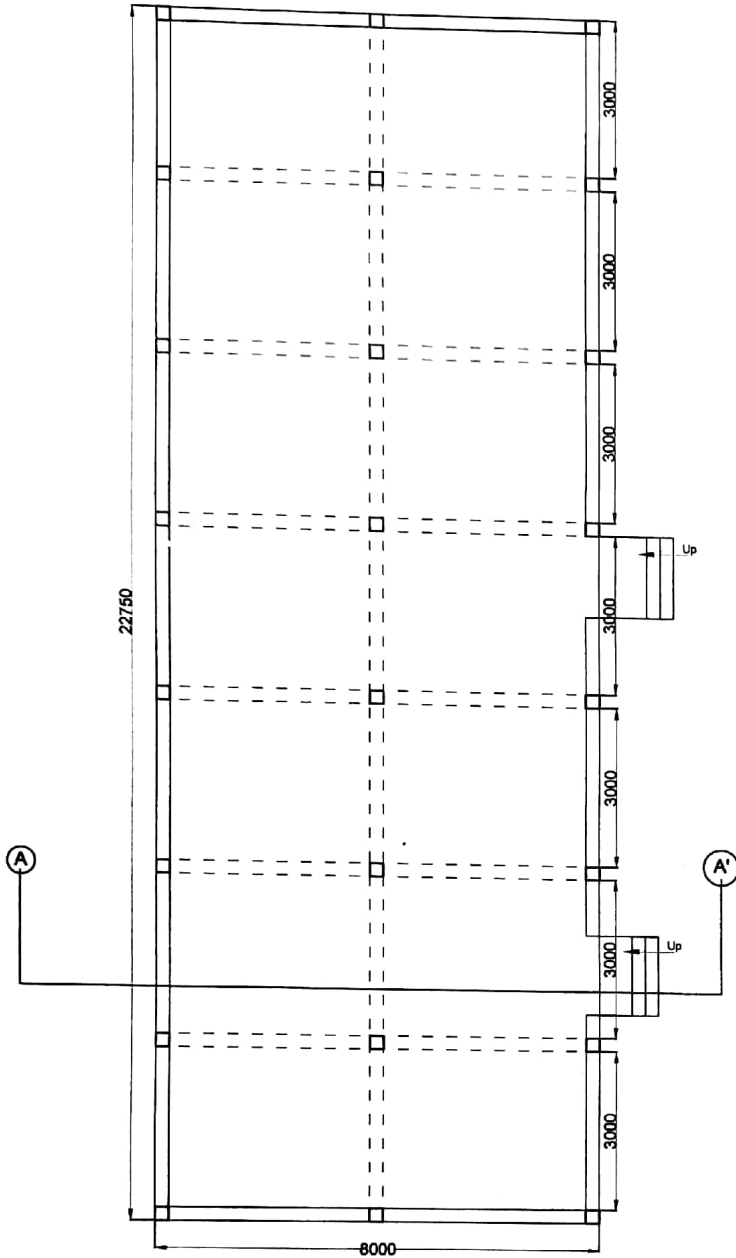
PRODUCED BY AN AUTODESK EDUCATIONAL PRODUCT

PRODUCED BY AN AUTODESK EDUCATIONAL PRODUCT

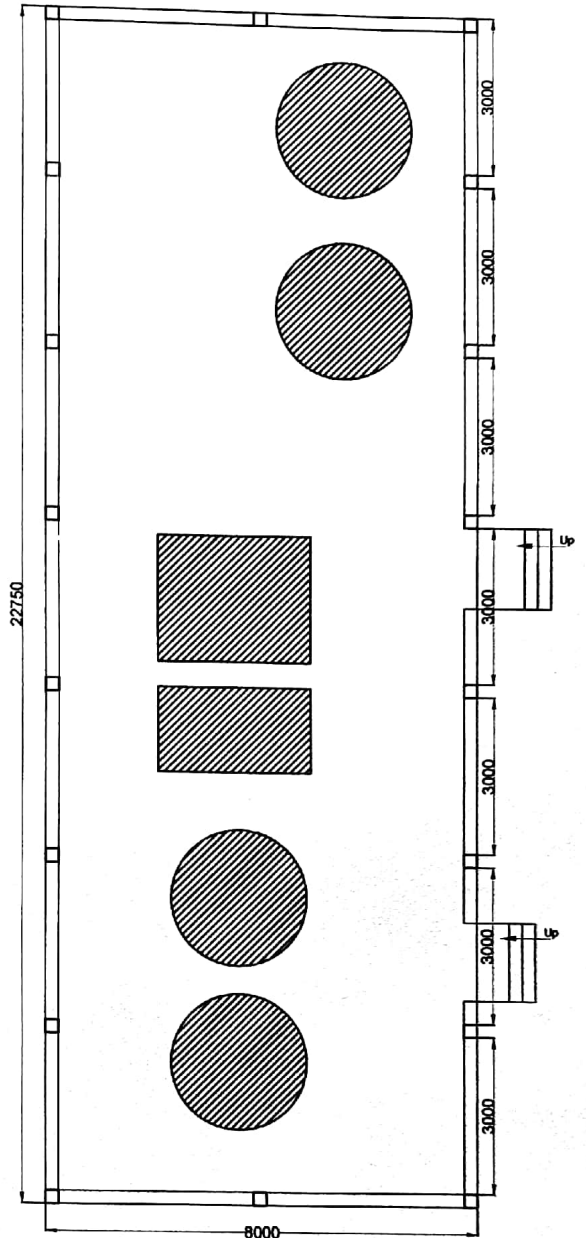
Sunil Kumar
Assistant Engineer (Civil)
I.G.I.M.S., Palna

Dwg - 01 & 02

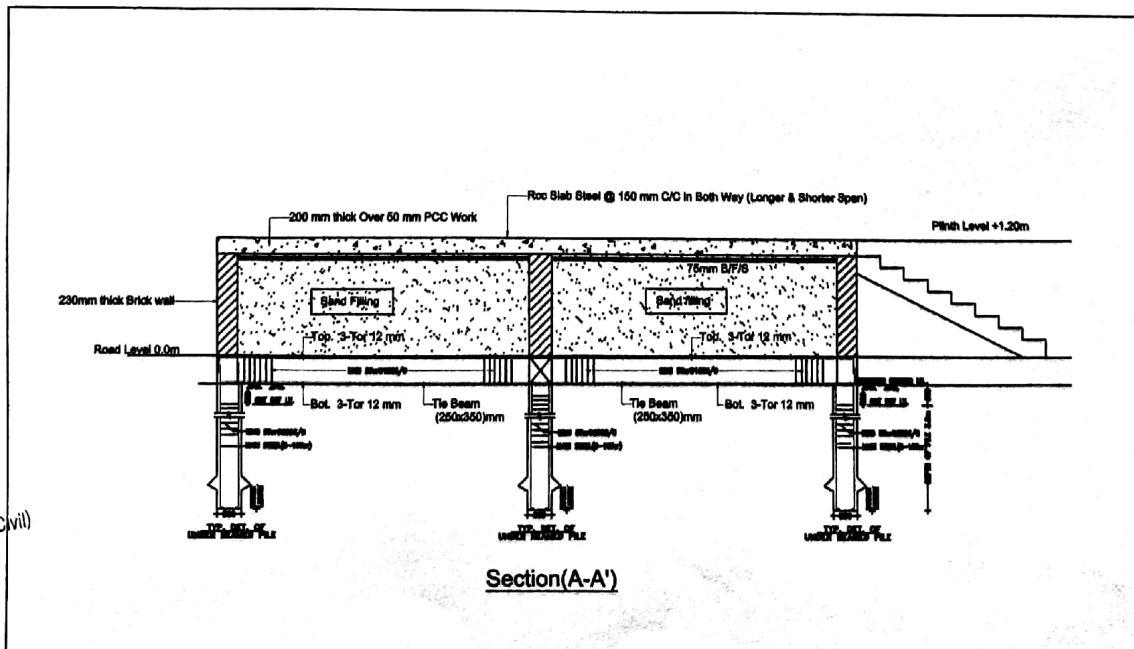




Rie-Beam & Column



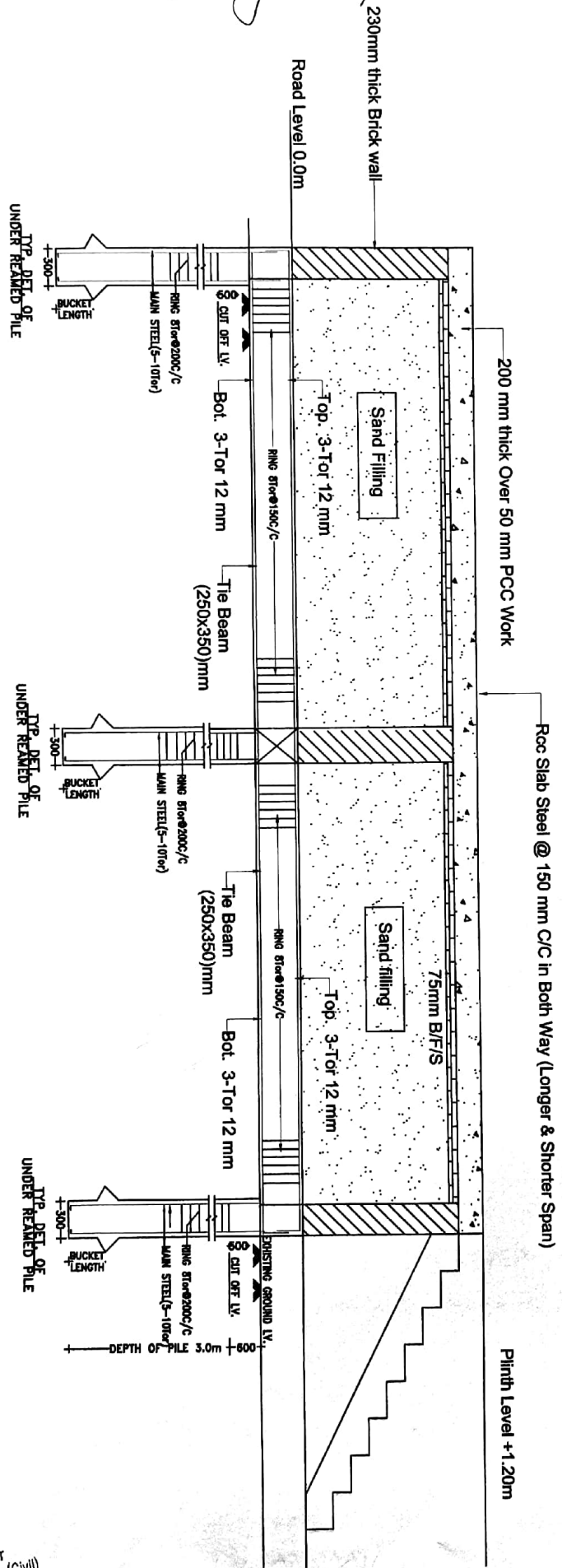
Ground Floor Plan of Plant Layout Proposal



Section(A-A')

Sunil Kumar
 Assistant Engineer (Civil)
 I.G.I.M.S., Patna

Dwg - 04



Section (A-A')


 Sunil Kumar
 Assistant Engineer (Civil)
 I.G.I.M.S., Patna